



VK0192 Datasheet

24×8 LCD DRIVER

Rev.1.3

Intellectual Property Statement:

Shenzhen Vinka Microelectronics Co., Ltd. (hereinafter referred to as “the Company”) owns legally registered intellectual property rights in both domestic and international jurisdictions. Any unauthorized use of the Company’s products or patented technologies by individuals or organizations is strictly prohibited.

The Company reserves the right to take legal action against any infringement, and to seek full compensation for damages or unlawful gains.

The Company’s name and trademarks are legally protected and may not be used or imitated without explicit written permission. No implied or express license shall be granted under any circumstances.

1 General Description

VK0192 is a RAM Mapping 24×8 LCD Driver, It can support LCD screens with a maximum of 192 pattern(24SEG×8COM).Only 3 or 4 lines are required to communication interface with the VK0192, it is used to configure display parameters and transfer display data, and can also enter the standby mode through Power down command (by Cmd LCD OFF,SYS DIS)

2 Key Features

- Operating voltage:2.4-5.2V
- Integrated RC oscillator (default)
- It can be externally connected to a 32KHz clock source (OSCI)
- Selectable LCD bias:1/4
- Selectable LCD duty:1/8
- Built-in 24×8 bit display RAM
- Power-down mode via software command(LCD OFF, SYS DIS)
- Eight selectable clock sources for time base / WDT
- WDT or time base overflow flag output via /IRQ pin
- 3 wire or 4 wire serial communication interface
- Software-configurable of LCD parameters
- Dual command formats for configuration and access
- Auto-increment addressing for sequential read/write
- VLCD adjustable via external pin ($\leq VDD$)
- Available Packages:
LQFP44(10.0mm × 10.0mm PP=0.8mm)

3 Application field

- Electricity meter/gas meter
- Massage device/beauty device
- Medical instruments
- Vehicle-mounted equipment
- Air conditioner/heater

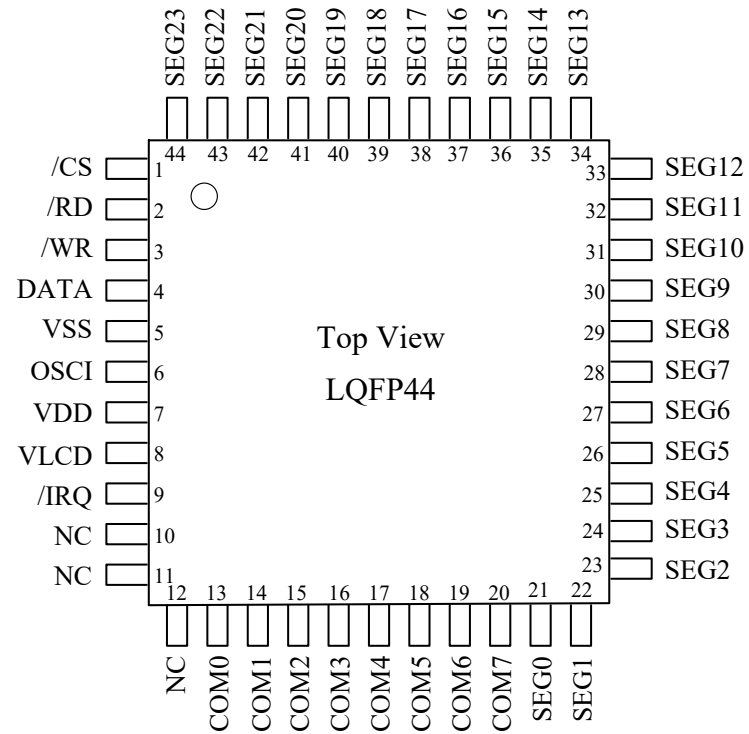
4 Product Selection

Part No.	VK0192	VK0256	VK0256B	VK0256C	VK0384
COM	8	8	8	8	8
SEG	24	32	32	32	48
On-chip oscillator	√	√	√	√	√
External clock	√	√	√	√	-

5 Ordering Information

Part No	Packaging	Tube Qty	Tray Qty	Box Qty	Total Qty	Notes
VK0192	LQFP44	-	160/tray	1600/box	9600 PCS	
VK0256	QFP64	-	66/tray	660/box	3960 PCS	
VK0256B	LQFP64	-	250/tray	2500/box	15000 PCS	
VK0256C	LQFP52	-	90/tray	900/box	5400 PCS	
VK0384	LQFP64	-	250/tray	2500/box	15000 PCS	

6 Package Pinout Information(LQFP44)



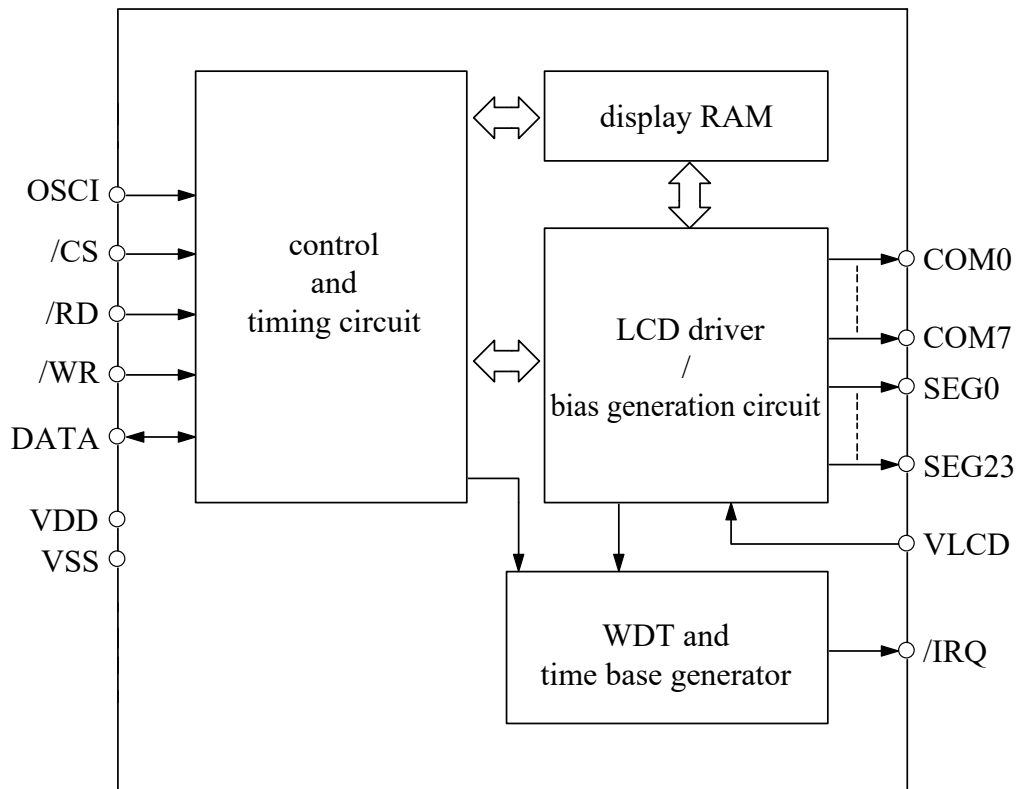
For more information: [Page 18](#)

6.1 VK0192/LQFP44 Pin Description

No.	Name	I/O	Function
1	/CS	I	Chip select signal with pull-up resistor ,active low.
2	/RD	I	Serial read signal with pull-up resistor, data out on the falling edge of the /RD signal.
3	/WR	I	Serial write signal with pull-up resistor, data latched on the rising edge of the /WR signal.
4	DATA	I/O	Serial data signal with pull-up resistor, input/output depending on access mode.
5	VSS	VSS	Negative power supply
6	OSCI	I	External clock source: OSCI connect a external clock source When using the internal RC oscillator, it is suspended.
7	VDD	VDD	Positive power supply
8	VLCD	I	LCD driving voltage input,must be $\leq VDD$
9	/IRQ	O	Time base or WDT overflow flag, NMOS open drain output.
10-12	NC	—	——
13-20	COM0-COM7	O	LCD COM drive outputs
21-44	SEG0-SEG23	O	LCD SEG drive outputs

7 Functional Description

7.1 Block Diagram



7.2 Display RAM

The VK0192 integrates 24×8 -bit RAM for LCD display. directly mapped to SEGx/COMx segments. Data is latched and updated on the LCD according to scan timing set by the system configuration. The display RAM can be accessed using three commands: READ, WRITE, and READ-MODIFY-WRITE. Each RAM address corresponds to a specific combination of SEG and COM lines.

The following is a mapping from the RAM to the LCD pattern:

	COM7	COM6	COM5	COM4		COM3	COM2	COM1	COM0		
SEG0					1					0	address 6 bit (A5---A0)
SEG1					3					2	
SEG2					5					4	
SEG3					7					6	
⋮					⋮					⋮	
SEG23					47					46	
	D3	D2	D1	D0	Data\Addr	D3	D2	D1	D0	Data\Addr	

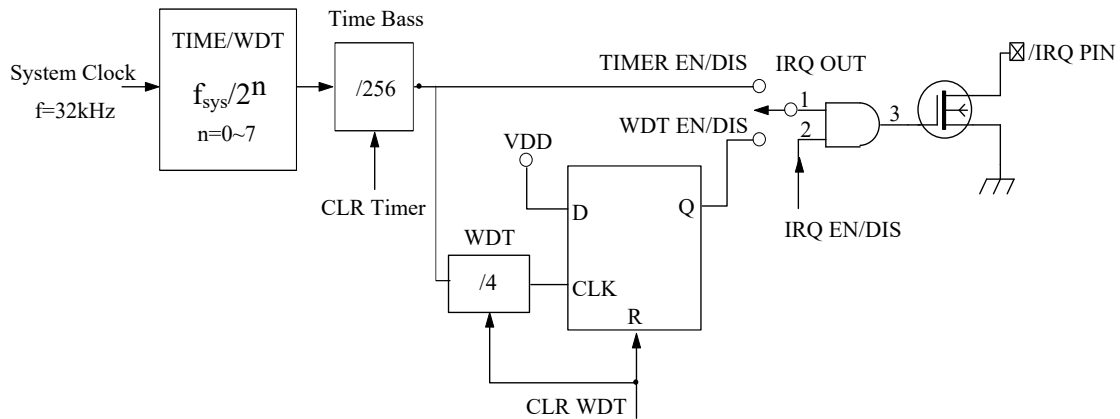
7.3 Time Base and WDT

The time base generator consists of an 8-stage ripple counter and provides accurate timing functionality. The Watchdog Timer (WDT) comprises the 8-stage time base plus an additional 2-stage counter. It helps reset or interrupt the host system in case of abnormal operation, such as unexpected jumps or execution errors. A WDT timeout sets an internal status flag. Both the time base overflow and WDT timeout flags can be routed to the /IRQ pin through software configuration. Eight frequency division options are available for the time base and WDT clock, derived using the formula:

$$f_{WDT} = f_{sys} / 2^n \quad (n=0 \sim 7) \quad f_{sys} = 32\text{kHz}$$

The time base generator and the Watchdog Timer (WDT) share the same 8-stage counter. The WDT is cleared by executing the CLR WDT command, while the time base generator can be cleared using either the CLR WDT or the CLR TIMER command. Executing the WDT EN command enables both the time base generator and the WDT timeout flag output, which can be routed to the /IRQ pin. Conversely, executing the WDT DIS command disables the time base generator. After the TIMER EN command is issued, the WDT is disconnected from the /IRQ pin, and the time base overflow signal is instead connected to it. The /IRQ output can be globally enabled or disabled using the IRQ EN and IRQ DIS commands, respectively. By default, the /IRQ output is disabled upon system power-up

Timer and WDT Configurations:



7.4 LCD Driver

The VK0192 is a 192-segment LCD driver (24SEG×8COM). It supports software-configurable bias settings of 1/4, and COM configurations of 8.

7.5 Communication Interfacing

The VK0192 communicates with the host via a 3-wire or 4-wire serial interface.

When used solely for display output, only 3 lines are required (/CS, /WR, and DATA);/RD is optional for reading.

- /CS: Chip select input. It enables the serial interface when low and terminates communication when high.
- /RD: Read clock input. On the falling edge, data is output from the device onto the DATA line.
- /WR: Write clock input. On the rising edge, data and commands from DATA are latched into the device.
- DATA: Bidirectional serial data line used to transfer both command and display data.
- /IRQ: Open-drain output pin for either WDT timeout or time base overflow flag, selectable via software.

7.6 Command Format

The VK0192 is configured via software commands that support two primary modes: command mode and data mode.

- Command mode is used to configure system-level parameters. It is identified by a command mode ID of 100.
- Data mode supports three types of memory operations: READ, WRITE, and READ-MODIFY-WRITE.

These commands allow the host controller to configure LCD behavior and access display RAM contents.

The following are the data mode IDs and the command mode ID:

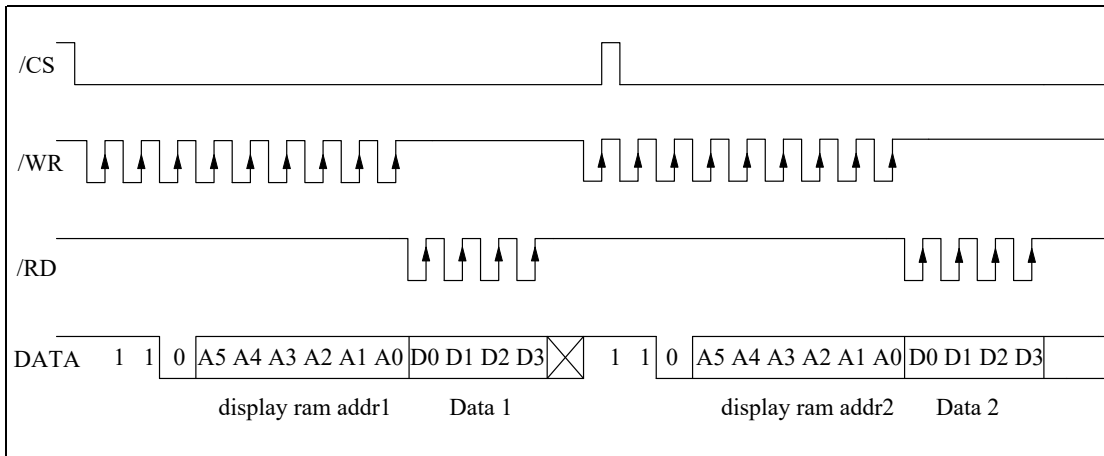
Operation	MODE	ID
READ	DATA	110
WRITE	DATA	101
Read-Modify-Write	DATA	101
COMMAND	COMMAND	100

8 CMD/Data Timing Diagrams

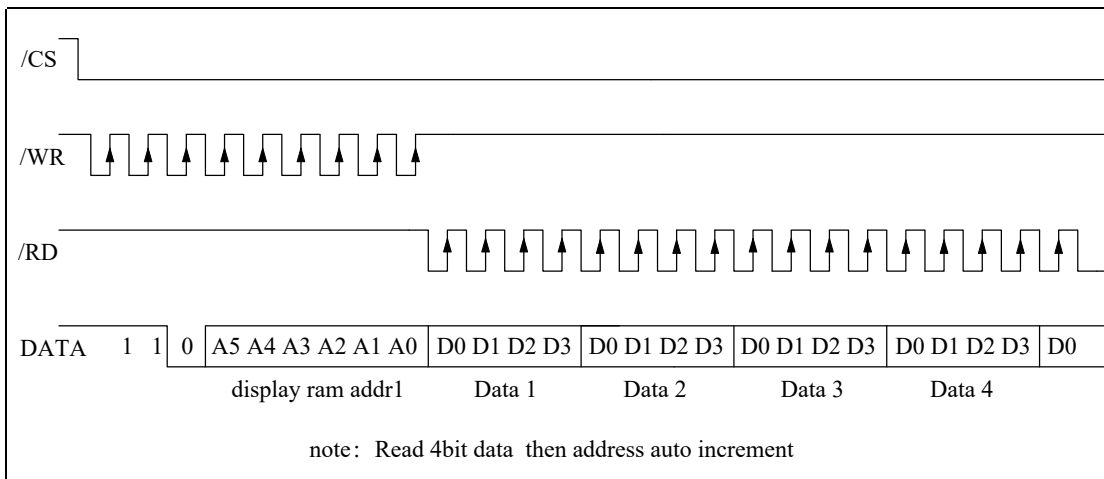
The command sequence corresponds to four ID codes.

8.1 READ Mode

Command code: 110

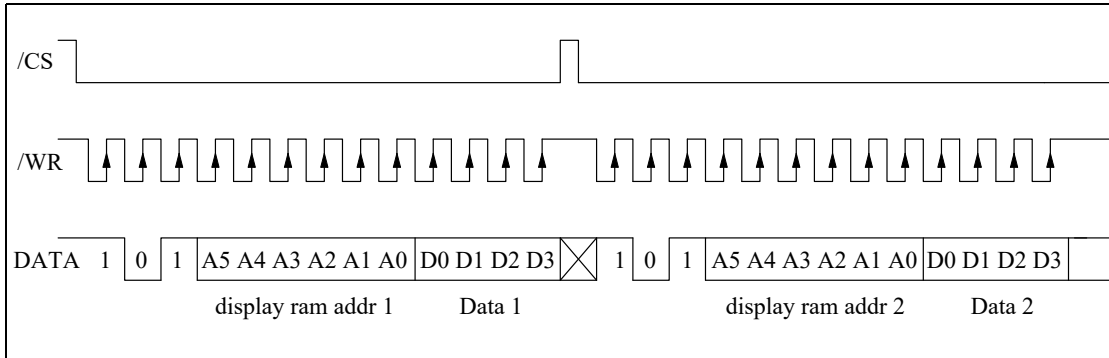


Successive Address Reading

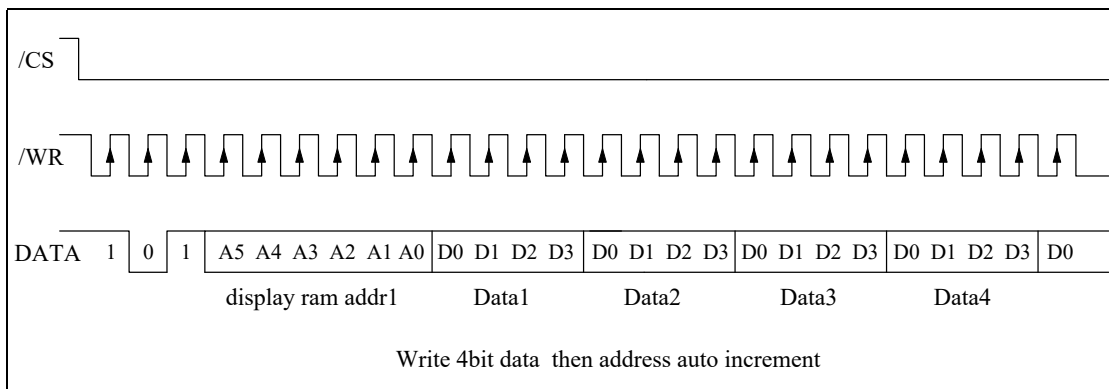


8.2 WRITE Mode

Command code: 101

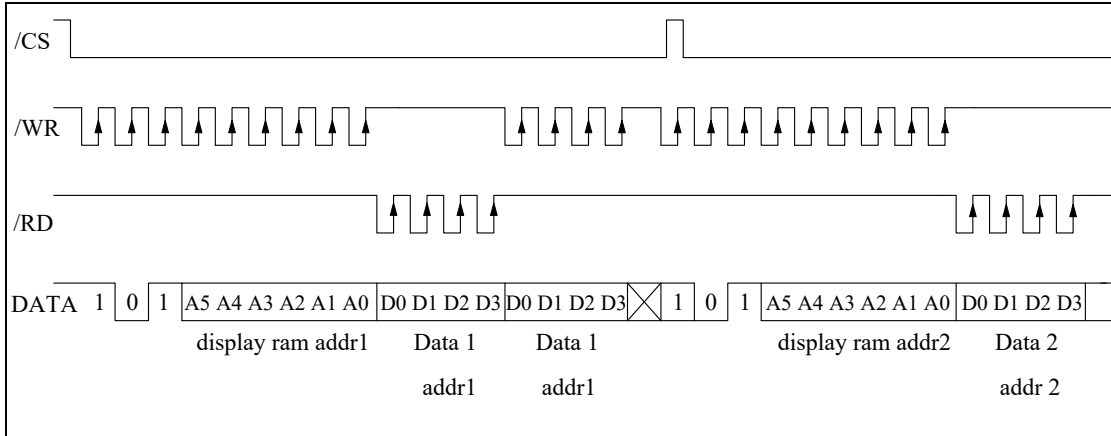


Successive Address Writing

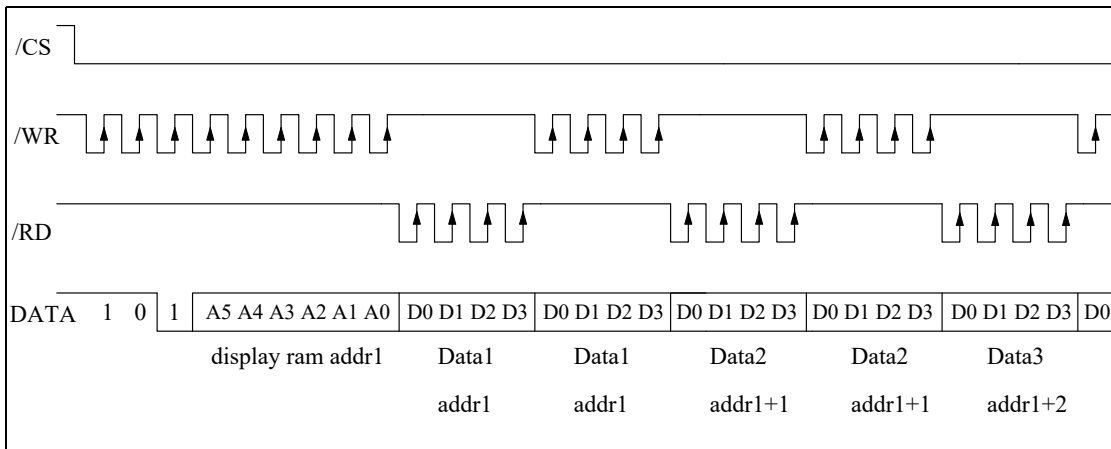


8.3 Read-Modify-Write Mode

Command Code : 101

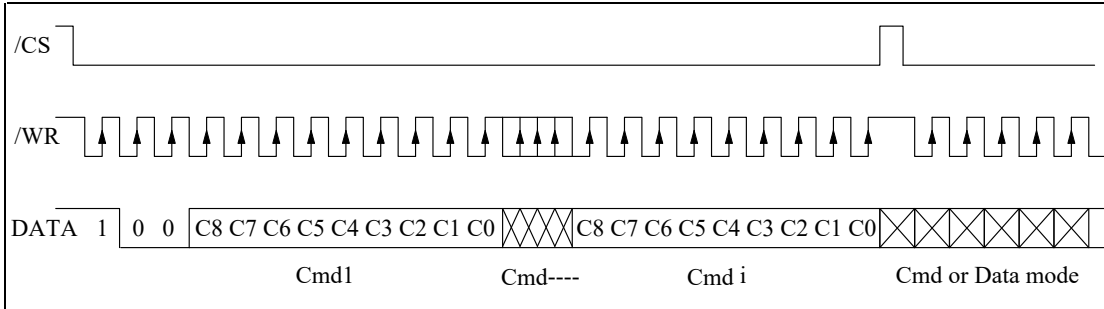


Successive Address Accessing



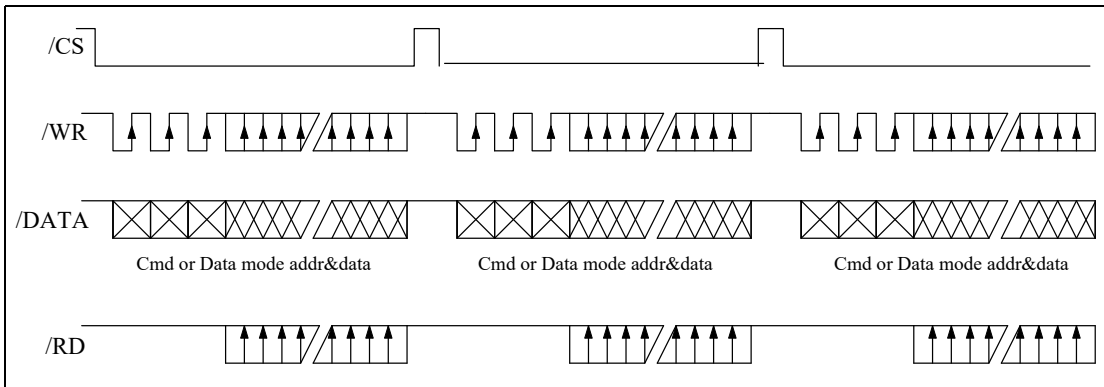
8.4 Command Mode

Command Code : 100



8.5 Data and Command Mode

Data and Command Mode



9 Command Summary

Name	ID	Command Code	D/C	Function	Def.
READ	110	A5A4A3A2A1A0D0D1D2D3	D	Read data from the RAM	
WRITE	101	A5A4A3A2A1A0D0D1D2D3	D	Write data to the RAM	
READ-MODIFY-WRITE	101	A5A4A3A2A1A0D0D1D2D3	D	READ and WRITE to the RAM	
SYS DIS	100	0000- 0000-X	C	Turn off system oscillator	YES
SYS EN	100	0000- 0001-X	C	Turn on the system clock	
LCD OFF	100	0000- 0010-X	C	Turn off LCD bias generator	YES
LCD ON	100	0000- 0011-X	C	Turn on LCD bias generator	
TIMERS DIS	100	0000- 0100-X	C	Disable time base output	
WDT DIS	100	0000- 0101-X	C	Disable WDT time-out flag output	
TIMER EN	100	0000- 0110-X	C	Enable time base output	
WDT EN	100	0000- 0111-X	C	Enable WDT time-out flag output	
CLR TIMER	100	0000- 10XX-X	C	Clear the contents of time base generator	
CLR WDT	100	0000- 11XX-X	C	Clear the contents of WDT stage	
RC 32k	100	0001- 0XXX-X	C	On-chip RC oscillator	YES
EXT 32k	100	0001- 1XXX-X	C	External clock source	
IRQ DIS	100	100X-0XXX-X	C	Disable IRQ output	YES
IRQ EN	100	100X-1XXX-X	C	Enable IRQ output	
F1	100	101X-X000-X	C	Time base/WDT clock output:1Hz The WDT time-out flag after: 4s	
F2	100	101X-X001-X	C	Time base/WDT clock output:2Hz The WDT time-out flag after: 2s	
F4	100	101X-X010-X	C	Time base/WDT clock output:4Hz The WDT time-out flag after: 1s	
F8	100	101X-X011-X	C	Time base/WDT clock output:8Hz The WDT time-out flag after: 1/2s	
F16	100	101X-X100-X	C	Time base/WDT clock output:16Hz The WDT time-out flag after: 1/4s	
F32	100	101X-X101-X	C	Time base/WDT clock output:32Hz The WDT time-out flag after: 1/8s	
F64	100	101X-X110-X	C	Time base/WDT clock output:64Hz The WDT time-out flag after: 1/16s	
F128	100	101X-X111-X	C	Time base/WDT clock output:128Hz The WDT time-out flag after: 1/32s	YES
TEST	100	1110-0000- X	C	Test mode	
NORMAL	100	1110-0011- X	C	Normal mode	YES

Note : X: 0 or 1

D/C:Data/Command mode

A5-A0: Display RAM addresses

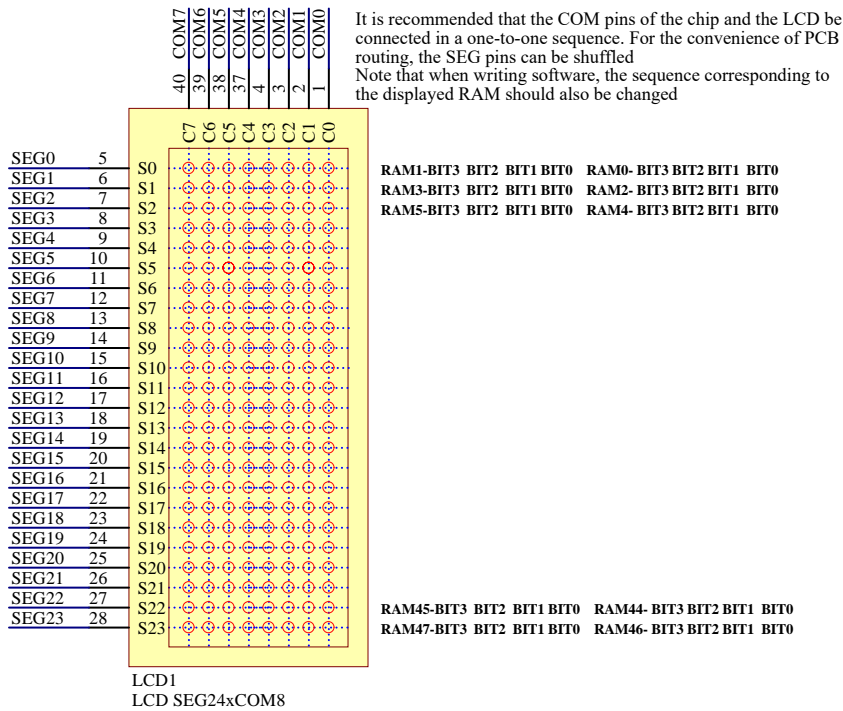
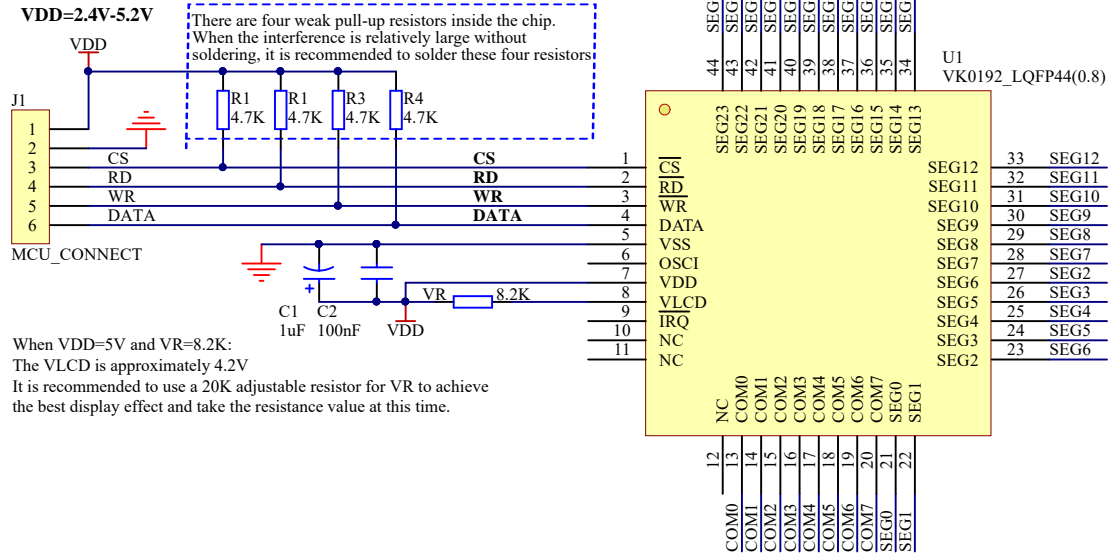
Def.:Power on reset default

D3-D0:4bit Display RAM data

110,101and 100 is Command ID

10 Application Circuits

When the LCD only displays, the RD pin can be left floating and not connected
 When the surrounding interference is relatively large, a 10R to 1k resistor and a PF-level small capacitor to ground can be connected in series on the communication pin
 When the power supply of the single-chip microcomputer (3.3V) and the driver chip (5V) is inconsistent, it is recommended to add a level conversion circuit to the communication pin



11 Electrical characteristics

11.1 Absolute Maximum Ratings

Parameter	Symbol	Ratings	Unit
Supply voltage	VDD	-0.3~5.5	V
Input Voltage	VIN	VSS-0.3~VDD+0.3	V
Storage Temperature	TSTG	-50~+125	°C
Operating Temperature	TOTG	-40~+85	°C

11.2 DC Electrical Characteristics

Parameter	Symbol	Min.	Typ.	Max.	Unit	Test Conditions	
						VDD	Conditions
Operating voltage	VDD	2.4	—	5.2	V	—	—
Operating current	IDD1	—	80	210	μA	3V	No load/LCD ON On-chip RC oscillator
		—	135	415		5V	
Operating current	IDD2	—	8	30	μA	3V	No load/LCD OFF On-chip RC oscillator
		—	20	55		5V	
Standby Current	ISTB	—	1	8	μA	3V	No load, Power down mode
		—	2	16		5V	
Low-level Input	VIL	0	—	0.6	V	3V	DATA, /WR, /CS, /RD
		0	—	1.0		5V	
High-level Input	VIH	2.4	—	3.0	V	3V	DATA, /WR, /CS, /RD
		4.0	—	5.0		5V	
/IRQ	IOL1	0.9	1.8	—	mA	3V	VOL=0.3V
		1.7	3.0	—		5V	VOL=0.5V
DATA	IOL1	200	450	—	μA	3V	VOL=0.3V
		250	500	—		5V	VOL=0.5V
DATA	IOH1	-200	-450	—	μA	3V	VOH=2.7V
		-250	-500	—		5V	VOH=4.5V
LCD COM Sink Current	IOL2	15	40	—	μA	3V	VOL=0.3V
		100	200	—		5V	VOL=0.5V
LCD COM Source Current	IOH2	-15	-30	—	μA	3V	VOH=2.7V
		-45	-90	—		5V	VOH=4.5V
LCD SEG Sink Current	IOL3	15	30	—	μA	3V	VOL=0.3V
		70	150	—		5V	VOL=0.5V
LCD SEG Source Current	IOH3	-6	-13	—	μA	3V	VOH=2.7V
		-20	-40	—		5V	VOH=4.5V
Pull-UP Resistor	RUP	100	200	300	kΩ	3V	DATA, /WR, /CS, /RD
		50	100	150		5V	

11.3 AC Electrical Characteristics

Item	Symbol	Min.	Typ.	Max.	Unit	Test Conditions	
						VDD	Conditions
System Clock	f_{SYS1}	22	32	40	kHz	3V	On-chip RC oscillator
		24	32	40		5V	
System Clock	f_{SYS2}	—	32	—	kHz	3V	External clock source
		—	32	—		5V	
LCD Clock	f_{LCD1}	44	64	80	Hz	3V	On-chip RC oscillator
		48	64	80		5V	
	f_{LCD2}	—	64	—	Hz	3V	External clock source
		—	64	—		5V	
LCD Common Period	t_{COM}	—	n/f_{LCD}	—	sec	—	N: Number of COM
Serial Data Clock(/WR)	F_{CLK1}	—	—	150	kHz	3V	Duty cycle 50%
		—	—	300		5V	
Serial Data Clock(/RD)	F_{CLK2}	—	—	75	kHz	3V	Duty cycle 50%
		—	—	150		5V	
Serial Interface Reset PW	t_{CS}	—	250	—	ns	—	/CS
WR,/RD Input Pulse Width	t_{CLK}	3.34	—	—	μs	3V	Write mode
		6.67	—	—			Read mode
		1.67	—	—	μs	5V	Write mode
		3.34	—	—			Read mode
Rise/Fall Time Serial Data Clock Width	t_r, t_f	—	120	—	ns	3V	—
						5V	
Setup Time for DATA to /WR, /RD Clock Width	t_{su}	—	120	—	ns	3V	—
						5V	
Hold Time for DATA to /WR, /RD Clock Width	t_h	—	120	—	ns	3V	—
						5V	
Setup Time for /CS to /WR, /RD Clock Width	$tsu1$	—	100	—	ns	3V	—
						5V	
Hold Time for /CS to /WR, /RD Clock Width	$th1$	—	100	—	ns	3V	—
						5V	

Figure 1

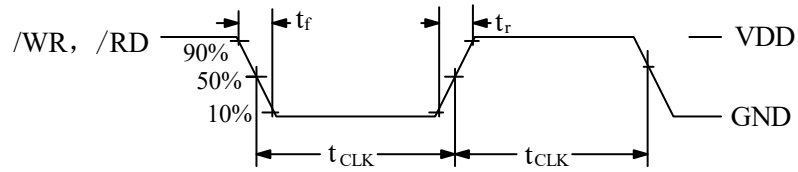


Figure 2

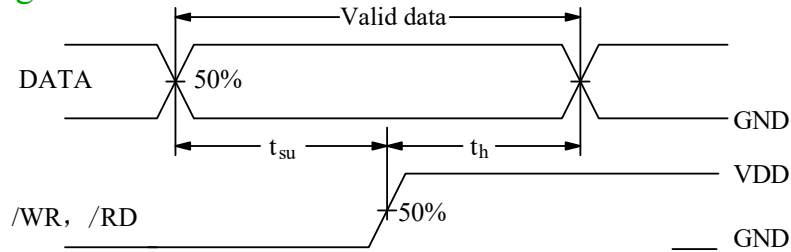


Figure 3

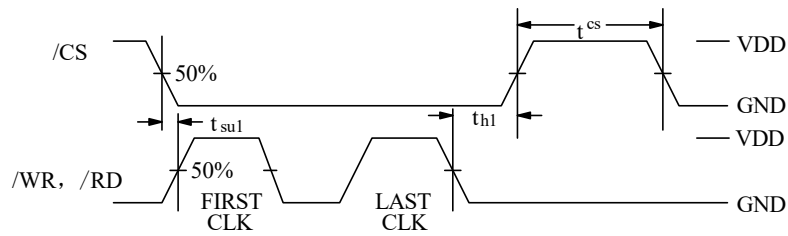
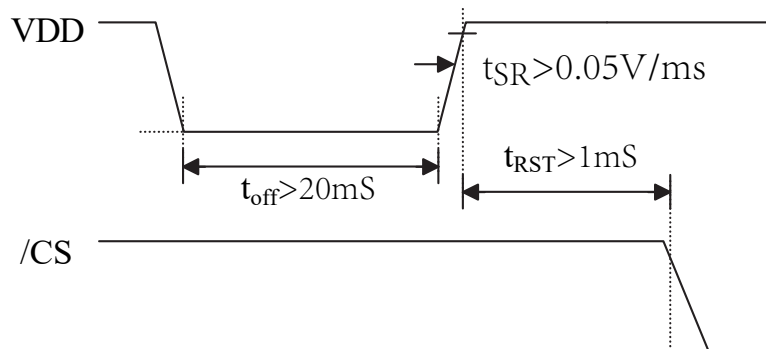
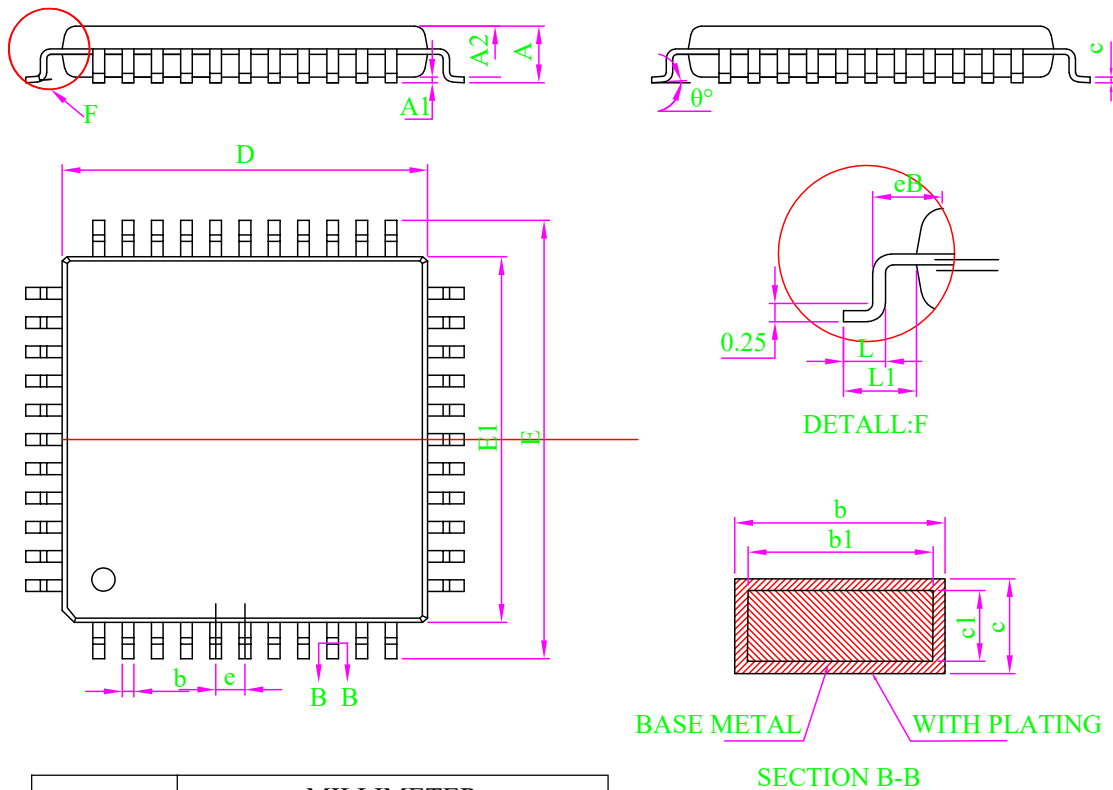


Figure 4



12 Package Information

12.1 LQFP44(10.0mm x 10.0mm PP=0.8mm)



SYMBOL	MILLIMETER		
	MIN	NOM	MAX
A	-	-	1.70
A1	0.10	0.15	0.20
A2	1.30	1.40	1.50
b	0.28	-	0.36
b1	0.27	0.30	0.33
c	0.13	-	0.17
c1	0.12	0.13	0.14
D	9.90	10.00	10.10
E	11.80	12.00	12.20
eB	11.05	-	11.30
E1	9.90	10.00	10.10
e	0.80 BSC		
L	0.42	0.57	0.72
L1	0.95	1.00	1.15
θ	0	-	8°

Note:

1. All dimension are in mm.
2. Dim D&E1 does not include plastic flash; Flash: Plastic residual around body edge after de junk/singulation.
3. Dim b does not include dambar protrusion/intrusion.
4. Plating thickness 0.007mm-0.015mm

13 Disclaimer

Warranty and liability — The information provided in this document is believed to be accurate and reliable. However, Shenzhen Vinka Microelectronics Co., Ltd. (hereinafter “the Company”) makes no warranties, express or implied, as to the completeness or suitability of this information for any specific purpose.

In no event shall the Company be liable for any indirect, incidental, or consequential damages, including but not limited to loss of profits, equipment damage, or system failure, arising out of the use of this product or documentation, regardless of the legal theory under which such liability is asserted.

Right to change — The Company reserves the right to modify any information contained herein without prior notice. The latest version of this document is available at:

<https://www.szvinka.com/>

Applicability — This product is not designed or intended for use in life-critical, medical, or safety systems where failure could result in injury or death. The customer shall assume full responsibility for any such use.

Application — All product application descriptions provided herein are intended for illustrative purposes only.

The Company makes no representations or warranties, express or implied, regarding the suitability of any specific application without further testing or modification.

The customer is solely responsible for determining whether the Company’s products are appropriate for their intended applications or end customers.

The customer shall ensure proper design practices, implementation safeguards, and operational validation to minimize risks associated with product use.

The Company shall not be held liable for any defects, losses, costs, or damages arising from weaknesses or failures in the customer’s own products or applications, or from the integration or use of third-party products.

Furthermore, the customer shall conduct all necessary testing and validation for any third-party deployment of the Company’s products to avoid potential misuse or associated damages. The Company assumes no liability in this regard.

Commercial terms of sale — Unless otherwise agreed in writing, sales of this product are subject to the Company’s standard terms and conditions of sale. The Company expressly rejects the applicability of the customer’s general terms and conditions.

Export control — This product may be subject to applicable export control regulations. The customer is solely responsible for compliance with such regulations, including obtaining any necessary export licenses.

18 Revision History

No.	Version	Date	Modify the content	Check
1	1.0	2018-08-10	initial release	YES
2	1.1	2018-10-11	Add reference circuit	YES
3	1.2	2019-03-21	Alignment correction	YES
4	1.3	2025-06-16	Change Description	YES

[1] Please refer to the latest version of this document before starting or finalizing any design.

[2] Since the release of this document, the status or availability of this product may have changed. For the most up-to-date information, please visit:

<https://www.szvinka.com/>

14 Revision History

No.	Version	Date	Modify the content	Check
1	1.0	2018-08-10	Original version	YES
2	1.1	2018-10-11	Add reference circuit	YES
3	1.2	2019-03-21	Check alignment	YES
4	1.3	2025-05-13	Update version	YES

[1] Consult the recently published documents before starting or finishing the design.

[2] Since the release of this document , the device product status described in this document may have changed and may differ in several cases. The latest product status information can be found on the Internet at <https://www.szvinka.com/>