



VK36N10I Datasheet

10-channel touch I2C output

Rev.1.2

Intellectual Property Statement:

Shenzhen Vinka Microelectronics Co., Ltd. (hereinafter referred to as “the Company”) owns legally registered intellectual property rights in both domestic and international jurisdictions. Any unauthorized use of the Company’s products or patented technologies by individuals or organizations is strictly prohibited.

The Company reserves the right to take legal action against any infringement, and to seek full compensation for damages or unlawful gains.

The Company’s name and trademarks are legally protected and may not be used or imitated without explicit written permission. No implied or express license shall be granted under any circumstances.

1 General Description

VK36N10I is a 10-channel touch detection chip designed to detect touch actions on external capacitive keys. With high integration, it requires only minimal external components to implement touch detection.

The chip supports I2C communication, includes one INT interrupt output pin, and allows selection of the active output level via an IO pin. Its internal specialized circuit design provides a high power supply rejection ratio, effectively preventing false triggering and ensuring high reliability even in challenging environments.

Equipped with features such as auto-calibration, low standby current, and voltage fluctuation resistance, the chip offers a simple and efficient solution for applications requiring touch keys with I2C output.

2 Key Features

- Operating voltage: 2.2-5.5V
- Standby current 10 μ A/3.0V
- Power-on reset function (POR)
- Low-voltage reset function (LVR)
- Touch output response time: 48ms in operating mode, 160ms in standby mode
- Output low level valid
- I2C output with INT interrupt pin
- Supports multi-key simultaneous touch detection
- Anti - misoperation function: maximum valid key output duration is 13 seconds
- Enters standby mode if no touch is detected for 4 seconds
- Overall sensitivity adjustable via a capacitor connected to the CS pin (1–47nF)
- Individual touch channel sensitivity fine-tunable with a small capacitor to ground (0–50pF)
- 0.3-second stabilization period after power-up; touch detection is disabled during this interval
- Automatic baseline calibration when no touch is detected after power-up
- Excellent voltage fluctuation tolerance and strong anti-interference performance
- Available Packages:
 - SOP16(150mil)(9.9mm x 3.9mm PP=1.27mm)
 - QFN16L(3.0mm x 3.0mm PP=0.5mm)

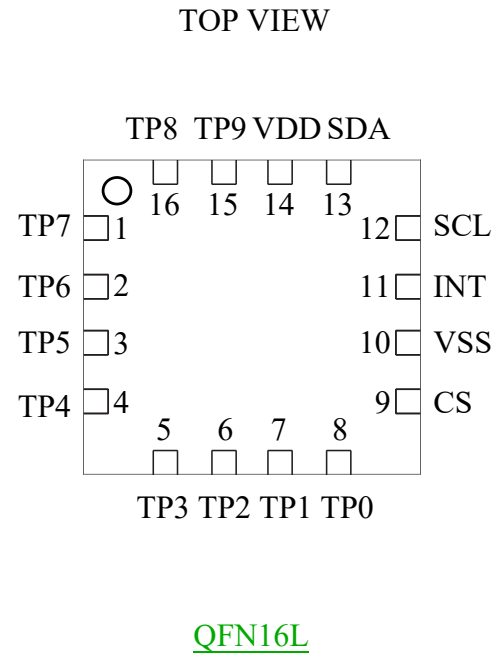
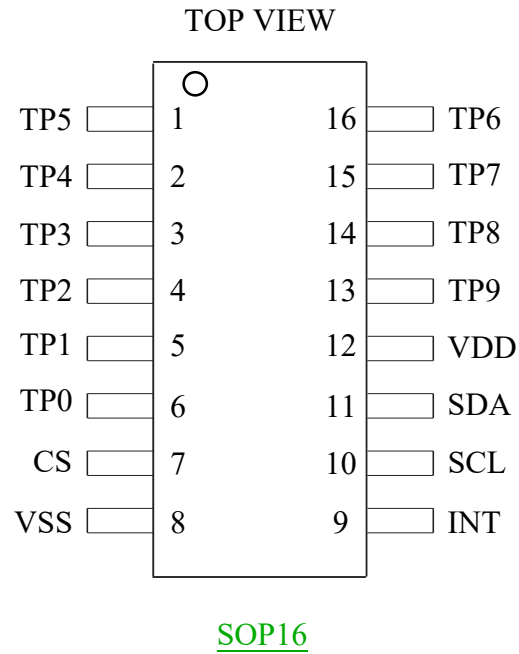
3 Product Selection

Part No.	Voltage/Standby Current	Output	Packaging
VK36N4I	2.2V-5.5V/10 μ A(3V)	I2C Output	SOP16/QFN16L
VK36N5I	2.2V-5.5V/10 μ A(3V)	I2C Output	SOP16/QFN16L
VK36N6I	2.2V-5.5V/10 μ A(3V)	I2C Output	SOP16/QFN16L
VK36N7I	2.2V-5.5V/10 μ A(3V)	I2C Output	SOP16/QFN16L
VK36N8I	2.2V-5.5V/10 μ A(3V)	I2C Output	SOP16/QFN16L
VK36N9I	2.2V-5.5V/10 μ A(3V)	I2C Output	SOP16/QFN16L
VK36N10I	2.2V-5.5V/10 μ A(3V)	I2C Output	SOP16/QFN16L

4 Ordering Information

Part No.	Packaging	Tube Qty	Tray(reel)Qty	Box Qty	Total Qty	Notes
VK36N4I	SOP16	50/tube		5000/box	50000 PCS	
	QFN16L		3000/reel	30000/box	120000 PCS	
VK36N5I	SOP16	50/tube		5000/box	50000 PCS	
	QFN16L		3000/reel	30000/box	120000 PCS	
VK36N6I	SOP16	50/tube		5000/box	50000 PCS	
	QFN16L		3000/reel	30000/box	120000 PCS	
VK36N7I	SOP16	50/tube		5000/box	50000 PCS	
	QFN16L		3000/reel	30000/box	120000 PCS	
VK36N8I	SOP16	50/tube		5000/box	50000 PCS	
	QFN16L		3000/reel	30000/box	120000 PCS	
VK36N9I	SOP16	50/tube		5000/box	50000 PCS	
	QFN16L		3000/reel	30000/box	120000 PCS	
VK36N10I	SOP16	50/tube		5000/box	50000 PCS	
	QFN16L		3000/reel	30000/box	120000 PCS	

5 Package Pinout Information(SOP16/QFN16L)



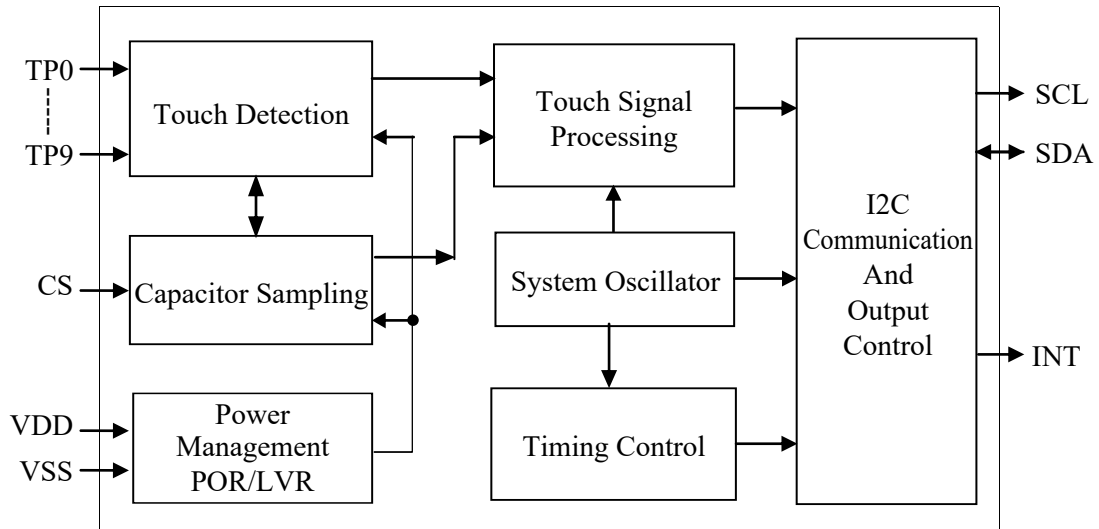
For more information: Page 13-14

5.1 VK36N10I/SOP16/QFN16L Pin Description

Pin Names		I/O	Function Description
SOP16	QFN16L		
1-TP5	3-TP5	I	Touch input: Connect a small capacitor to ground to fine-tune the sensitivity (1-50pF), and it is most sensitive when not connected
2-TP4	4-TP4	I	Touch input: Connect a small capacitor to ground to fine-tune the sensitivity (1-50pF), and it is most sensitive when not connected
3-TP3	5-TP3	I	Touch input: Connect a small capacitor to ground to fine-tune the sensitivity (1-50pF), and it is most sensitive when not connected
4-TP2	6-TP2	I	Touch input: Connect a small capacitor to ground to fine-tune the sensitivity (1-50pF), and it is most sensitive when not connected
5-TP1	7-TP1	I	Touch input: Connect a small capacitor to ground to fine-tune the sensitivity (1-50pF), and it is most sensitive when not connected
6-TP0	8-TP0	I	Touch input: Connect a small capacitor to ground to fine-tune the sensitivity (1-50pF), and it is most sensitive when not connected
7-CS	9-CS	I	Sensitivity adjustment, connect to ground capacitor (1-47nF)
8-VSS	10-VSS	VSS	Negative power supply
9-INT	11-INT	I	Touch state output and open-drain output require an external pull-up resistor
10-SCL	12-SCL	I	The I2C serial clock pin requires an external pull-up resistor
11-SDA	13-SDA	I/O	The I2C serial data input/output pins need to be connected to an external pull-up resistor
12-VDD	14-VDD	VDD	Positive power supply
13-TP9	15-TP9	I	Touch input: Connect a small capacitor to ground to fine-tune the sensitivity (1-50pF), and it is most sensitive when not connected
14-TP8	16-TP8	I	Touch input: Connect a small capacitor to ground to fine-tune the sensitivity (1-50pF), and it is most sensitive when not connected
15-TP7	1-TP7	I	Touch input: Connect a small capacitor to ground to fine-tune the sensitivity (1-50pF), and it is most sensitive when not connected
16-TP6	2-TP6	I	Touch input: Connect a small capacitor to ground to fine-tune the sensitivity (1-50pF), and it is most sensitive when not connected

6 Functional Description

6.1 Block Diagram



6.2 Automatic Calibration

After power-on, the chip will be initialized to obtain the first reference value. When there is no touch, the touch chip will automatically calibrate the reference value, allowing it to change dynamically according to the external environment.

For example, reliable touch detection can be achieved through this mechanism when there are temperature changes or environmental noise.

6.3 Fool-proof function

To minimize the detection of unintentional key presses such as accidentally touching the sensing electrode, the chip is equipped with a maximum key press duration function internally. When a touch key is pressed, the internal timer starts to count. Once the key is pressed for too long, exceeding approximately 13 seconds, the touch chip will ignore the status of the touched key, recalculate it, obtain a new reference value, and simultaneously reset the output status to the initial power-on state.

6.4 Resistance to voltage fluctuations

The chip is equipped with an anti-voltage fluctuation function, which can prevent the touch keys from malfunctioning due to the sudden drop in working voltage caused by the large current drive from the outside.

6.5 Output Mode

The output of VK36N10I is an I2C output and an INT interrupt pin. The valid output level can be selected by the state of the AHLB pin during power-on.

The INT pin outputs the touch status. When there is a change in the output level of the touch, the output level returns to the power-on state when there is no touch.

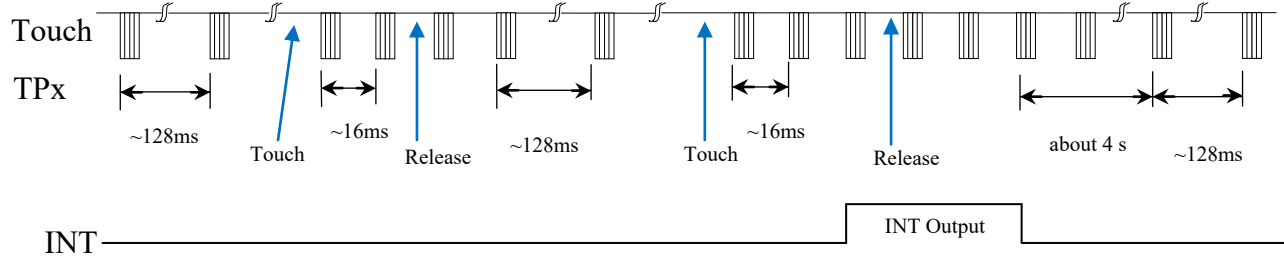
Data format: INT + I2C data key value.

Output low level valid					
Touch Pin	I2C data corresponding key value	INT	Touch Pin	I2C data corresponding key value	INT
	B9 B8 B7 B6 B5 B4 B3 B2 B1 B0			B9 B8 B7 B6 B5 B4 B3 B2 B1 B0	
TP0 Touch	1 1 1 1 1 1 1 1 1 0	0	TP0 Release	1 1 1 1 1 1 1 1 1 1	1
TP1 Touch	1 1 1 1 1 1 1 1 0 1	0	TP1 Release	1 1 1 1 1 1 1 1 1 1	1
TP2 Touch	1 1 1 1 1 1 1 0 1 1	0	TP2 Release	1 1 1 1 1 1 1 1 1 1	1
TP3 Touch	1 1 1 1 1 1 0 1 1 1	0	TP3 Release	1 1 1 1 1 1 1 1 1 1	1
TP4 Touch	1 1 1 1 1 0 1 1 1 1	0	TP4 Release	1 1 1 1 1 1 1 1 1 1	1
TP5 Touch	1 1 1 1 0 1 1 1 1 1	0	TP5 Release	1 1 1 1 1 1 1 1 1 1	1
TP6 Touch	1 1 1 0 1 1 1 1 1 1	0	TP6 Release	1 1 1 1 1 1 1 1 1 1	1
TP7 Touch	1 1 0 1 1 1 1 1 1 1	0	TP7 Release	1 1 1 1 1 1 1 1 1 1	1
TP8 Touch	1 0 1 1 1 1 1 1 1 1	0	TP8 Release	1 1 1 1 1 1 1 1 1 1	1
TP9 Touch	0 1 1 1 1 1 1 1 1 1	0	TP9 Release	1 1 1 1 1 1 1 1 1 1	1

Note: When powered on, I2C data =11 1111 1111 , INT output pin level =1

6.6 Working Mode

The VK36N10I chip has two working modes: standby mode and normal mode. The key was touched and switched to the normal mode. The keyless touch 4S automatically enters standby mode to reduce power consumption. When VDD=5V, the INT output response is approximately 160 milliseconds in standby mode and about 48 milliseconds in working mode.



6.7 Sensitivity Adjustment

The sensitivity of VK36N10I is related to the size of the touch PAD, the thickness of the shell, the size of the sensitivity capacitance, etc. The sensitivity should be adjusted according to the actual application of the product. The sensitivity can be adjusted from the following four aspects:

1. Touch the area of the PAD
Under other unchanged conditions, the larger the touch area, the more sensitive it is, but the area must be within the effective area.
2. The thickness of the shell
Under other unchanged conditions, the thinner the casing, the higher the sensitivity; the thicker the casing, the lower the sensitivity. However, the thickness must not exceed the maximum limit.
3. Adjust the capacitance value of pin CS to ground
CS adjusts the overall sensitivity. The larger the value, the more sensitive it is. Commonly used values range from 1 to 47nF, and for some special applications, there are also values exceeding 200nF.
4. Adjust the small capacitance between the touch foot and the ground
The sensitivity is fine-tuned by touching the small capacitance of the touch foot to the ground. The larger the capacitance, the lower the sensitivity. It is most sensitive without a capacitor. Common values range from 1 to 50pF.

Shell thickness (acrylic or glass)	CS Electrical value (for reference only)
<3mm	6.8nF/25V
3-6mm	10nF/25V
6-10mm	22nF/25V

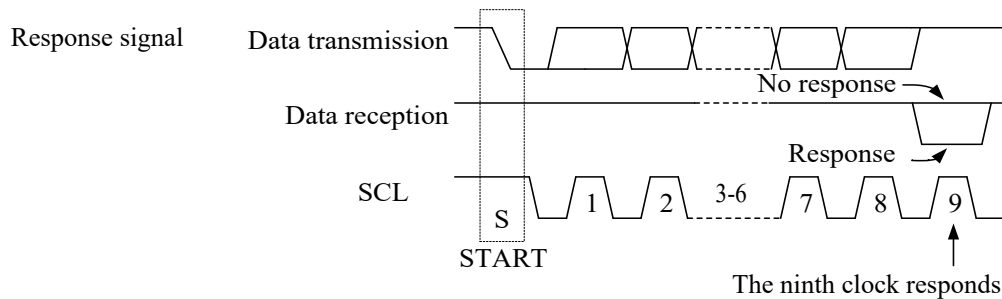
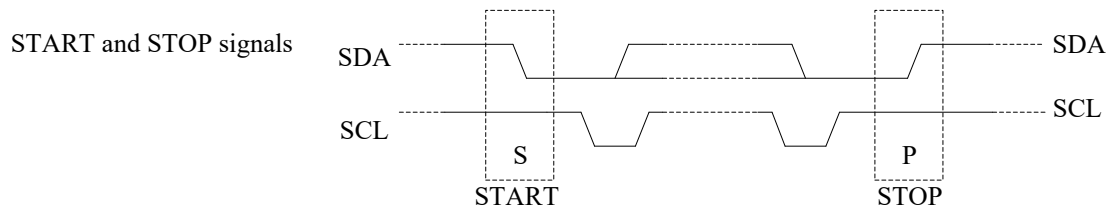
7 I2C Communication Interface

The VK36N10I has 2 communication pins, following the I2C protocol, with a maximum communication speed of 400kbit/S.

The SCL pin is the clock input pin, and the SDA pin is the serial data input/output pin. An external pull-up resistor is required.

When the I2C bus is idle, both of these pins are at a high level. When the SCL signal is at a high level and the SDA signal changes from a high level to a low level, it starts to work or restarts to work. When the SCL signal is at a high level and the SDA signal changes from a low level to a high level, it stops working.

When the SCL signal is at a high level, the data on the SDA port is valid and stable. Only when the SCL signal is at a low level can the level of the SDA port be changed.

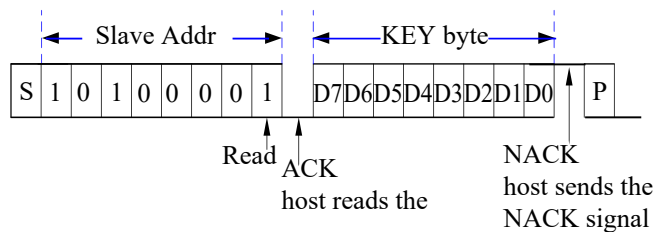


IC address

(0xA1)bit0=1 read bit

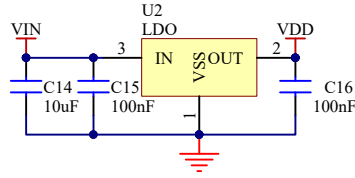
1	0	1	0	0	0	0	0	1
---	---	---	---	---	---	---	---	---

Read a byte of key value:

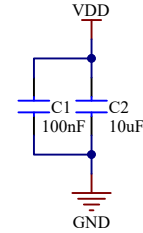


8 Application Circuits

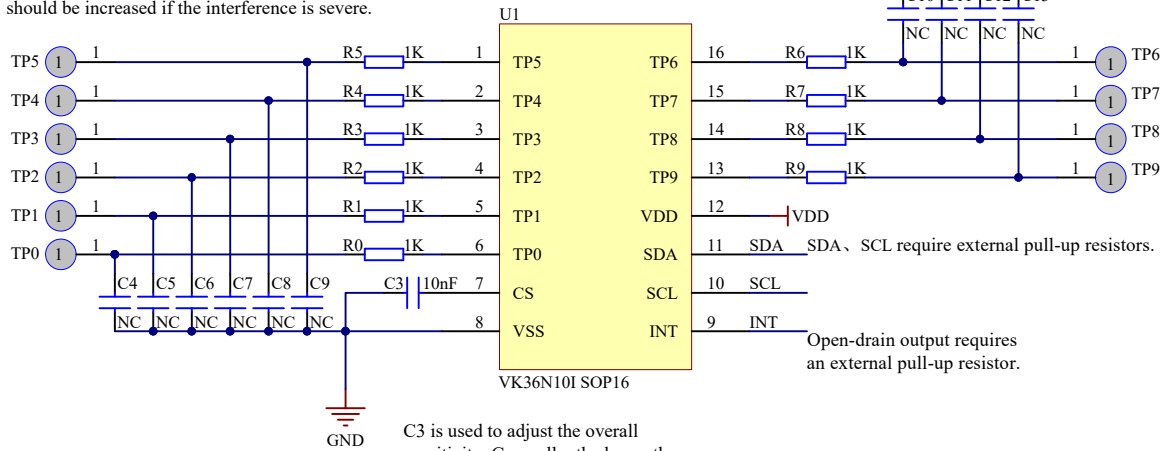
It is recommended to use LDO for power supply



Add a filter capacitor to the power pin to stabilize the power supply



C4-C13 is used to fine-tune the sensitivity of each channel. Generally, the larger the capacitance (from 0pF to 50pF), the less sensitive it is. The unconnected one is the most sensitive. The touch pins are connected in series with a 1K resistor to enhance anti-interference. The resistance value of the series-connected 1K resistor usually ranges from 0R to 10K. Depending on the interference situation, the resistance value should be increased if the interference is severe.



C3 is used to adjust the overall sensitivity. Generally, the larger the capacitance (ranging from 1nF to 47nF), the more sensitive it is.

9 Electrical Characteristics

Absolute Maximum Ratings

Parameter	Symbol	Ratings	Unit
Power Voltage	VDD	-0.3~6.0	V
Input Voltage	V _{IN}	GND-0.3~VDD+0.3	V
Storage Temperature	T _{STG}	-50~+125	°C
Operating Temperature	T _{OTG}	-40~+85	°C
Human Body Mode	ESD	4KV-8KV(Class 3A)	KV

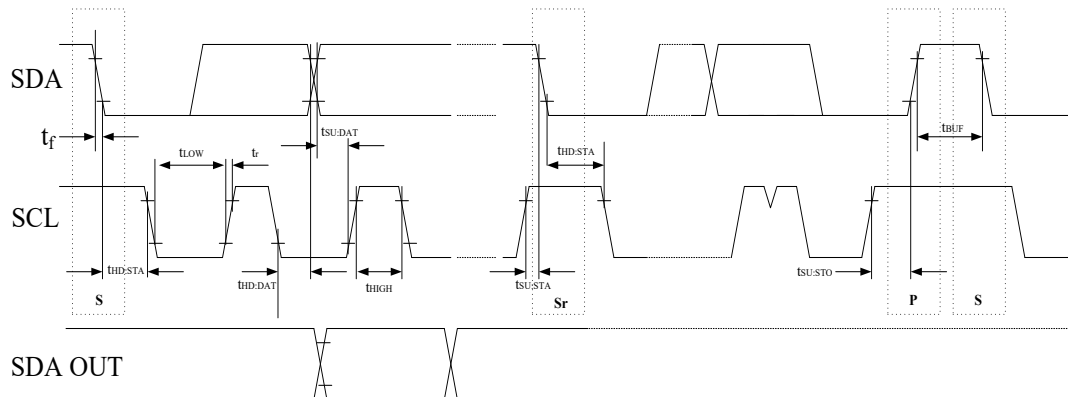
9.1 DC Electrical Characteristics

Parameter	Symbol	Min.	Typ.	Max.	Unit	Test Conditions (25 °C)	
						VDD	Conditions
Operating voltage	VDD	2.2	3.0	5.5	—	—	—
Low-voltage reset	LVR	—	2.0	2.1	—	—	—
Operating current	I _{OP}	—	1.3	—	mA	3.0V	CS=10nF
		—	2.2	—		5.0V	
Standby current	I _{ST}	—	10	—	μA	3.0V	CS=10nF
		—	33	—		5.0V	
Output sink current	I _{IL}	—	4	—	mA	3.0V	V _{OL} =0.6V
		—	8	—		5.0V	
Output source current	I _{OL}	—	-2	—	mA	3.0V	V _{OH} =2.6V
		—	-4	—		5.0V	V _{OH} =4.3V
Input low voltage	V _{IL}	—	—	0.3	VDD	VDD	Input low voltage
Input high voltage	V _{IH}	0.7	—	1	VDD	VDD	Input high voltage
Input the pull-up resistor	R _{PH}	—	150k	—	ohm	3.0V	VDD=3V
Input the pull-down resistor	R _{PL}	—	50k	—	ohm	3.0V	VDD=3V
Output response time	T _R	—	45	—	mS	3.0V	Normal mode
		—	48	—		5.0V	Normal mode
		—	150	—	mS	3.0V	Standby mode
		—	160	—		5.0V	Standby mode

9.3 交流参数

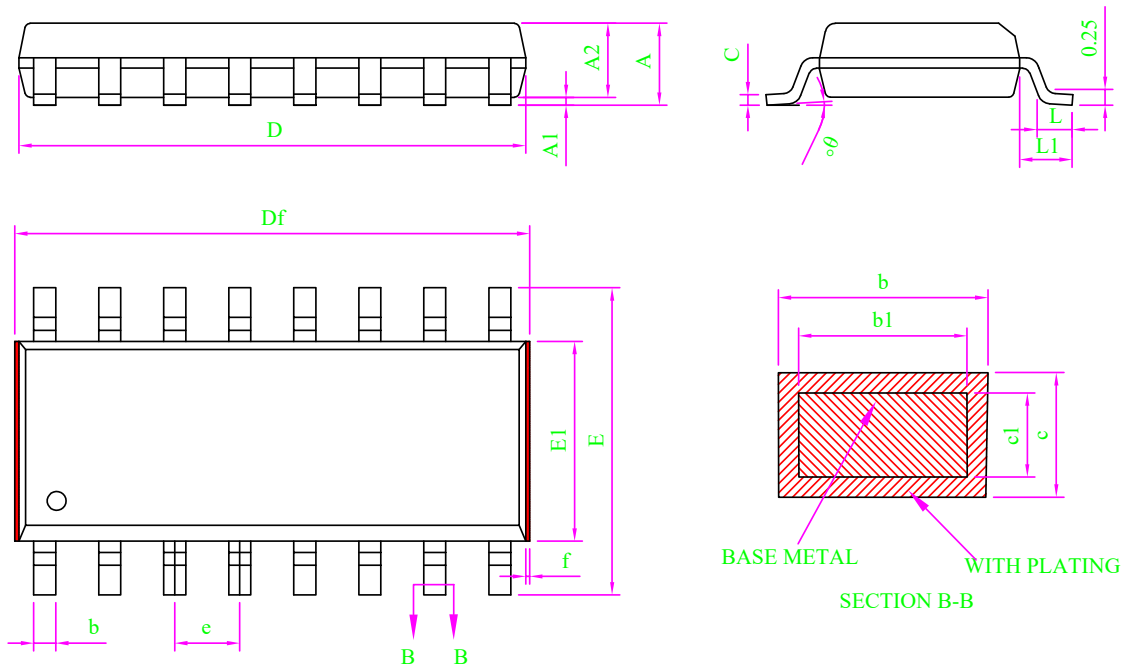
符号	参数	最小值	最大值	单位	测试条件
					条件
f_{SCL}	时钟频率	—	400	KHZ	—
t_{BUF}	总线空闲时间	1.3	—	μs	在此时间内总线必须保持空闲直到新的传输开始
$t_{HD; STA}$	启动条件保持时间	0.6	—	μs	在此期间之后,将生成第一个时钟脉冲
t_{LOW}	SCL 低电平时间	1.3	—	μs	—
t_{HIGH}	SCL 高电平时间	0.6	—	μs	—
$t_{SU; STA}$	Start 状态设置时间	0.6	—	μs	仅与重复的START信号有关
$t_{HD; DAT}$	数据保持时间	0	—	μs	—
$t_{SU; DAT}$	数据设置时间	100	—	ns	—
t_r	上升时间	—	0.3	μs	周期性采样
t_f	下降时间	—	0.3	μs	周期性采样
$t_{SU; STO}$	停止条件设置时间	0.6	—	μs	—
t_{AA}	有效时钟输出时间	—	0.9	μs	—
t_{SP}	输入滤波时间常数 (SDA 和 SCL 引脚)	—	50	ns	噪声抑制时间

I²C 时序



10 封装信息

10.1 SOP16(9.9mm x 3.9mm PP=1.27mm)

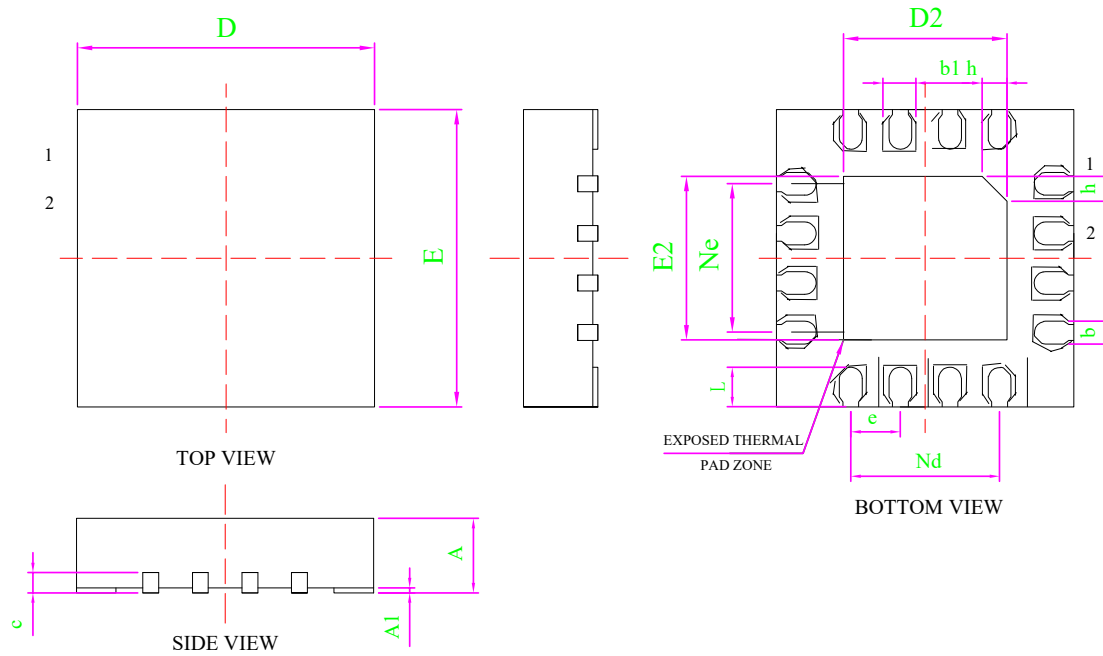


Note:

- All dimension are in mm.
Dim D&E1 does not include plastic flash; Df includes plastic flash(f);
Flash: Plastic residual around body edge after de junk/singulation.
- Dim b does not include dambar protrusion/intrusion.
- Plating thickness 0.007mm-0.020mm

MILLIMETER			
SYMBOL	MIN	NOM	MAX
A	-	-	1.75
A1	0.10	0.15	0.20
A2	1.35	1.45	1.55
b	0.39	-	0.47
b1	0.38	0.41	0.43
c	0.20	-	0.25
c1	0.19	0.20	0.21
D	9.80	9.90	10.00
Df	9.90	-	10.40
E	5.80	6.00	6.20
E1	3.80	3.90	4.00
e	1.27BSC		
L	0.51	0.66	0.81
L1	0.95	1.05	1.15
θ	0	-	8°
f	0.05	-	0.20

10.2 QFN16L(3.0mm × 3.0mm PP=0.5mm)



Dimensions			
SYMBOL	MIN	NOMINAL	MAX
A	0.70	0.75	0.80
A1	0	0.02	0.05
b	0.18	0.25	0.30
b1	0.30	0.35	0.40
c	0.18	0.20	0.25
D	2.90	3.00	3.10
D2	1.55	1.65	1.75
e	0.50BSC		
Ne	1.50BSC		
Nd	1.50BSC		
E	2.90	3.00	3.10
E2	1.55	1.65	1.75
L	0.35	0.40	0.45
h	0.20	0.25	0.30
L/F 载体尺寸 (miL)	75*75		

11 Disclaimer

Warranty and liability — The information provided in this document is believed to be accurate and reliable. However, Shenzhen Vinka Microelectronics Co., Ltd. (hereinafter “the Company”) makes no warranties, express or implied, as to the completeness or suitability of this information for any specific purpose.

In no event shall the Company be liable for any indirect, incidental, or consequential damages, including but not limited to loss of profits, equipment damage, or system failure, arising out of the use of this product or documentation, regardless of the legal theory under which such liability is asserted.

Right to change — The Company reserves the right to modify any information contained herein without prior notice. The latest version of this document is available at:

<https://www.szvinka.com/>

Applicability — This product is not designed or intended for use in life-critical, medical, or safety systems where failure could result in injury or death. The customer shall assume full responsibility for any such use.

Application — All product application descriptions provided herein are intended for illustrative purposes only. The Company makes no representations or warranties, express or implied, regarding the suitability of any specific application without further testing or modification.

The customer is solely responsible for determining whether the Company’s products are appropriate for their intended applications or end customers.

The customer shall ensure proper design practices, implementation safeguards, and operational validation to minimize risks associated with product use.

The Company shall not be held liable for any defects, losses, costs, or damages arising from weaknesses or failures in the customer’s own products or applications, or from the integration or use of third-party products.

Furthermore, the customer shall conduct all necessary testing and validation for any third-party deployment of the Company’s products to avoid potential misuse or associated damages. The Company assumes no liability in this regard.

Commercial terms of sale — Unless otherwise agreed in writing, sales of this product are subject to the Company’s standard terms and conditions of sale. The Company expressly rejects the applicability of the customer’s general terms and conditions.

Export control — This product may be subject to applicable export control regulations. The customer is solely responsible for compliance with such regulations, including obtaining any necessary export licenses.

12 历史版本

No.	版本	日期	修订内容	检查
1	1.0	2018-08-10	原始版本	YES
2	1.1	2020-02-11	添加参考电路	YES
3	1.2	2024-11-15	更新内容	YES

[1] 在开始或完成设计之前，请查阅最近发布的文件。

[2] 自本档发布以来，本档中描述的设备产品状态可能已经发生了变化，并且在多个情况下可能会有所不同。最新的产品状态信息可在互联网上查询，网址为 <https://www.szvinka.com/>